



## L800R-2 Large Capacity Low Speed Refrigerated Centrifuge

Centrifuge L800R-2 is a new developed intelligent centrifuge with international advanced technology. Swing rotor 6x1500ml compatible with Cence/Xiangyi unique 1500ml bottle, to improve the production efficiency of biopharmaceutical and chemical products.



### Product advantages

#### ♦Powerful Safety Performance

Centrifuge chamber adopt 316L stainless steel, PPCO material centrifuge bottle and blood bag adapter which can be autoclaved. the sturdy rotor, bucket constructed of high-strength alloy aluminum. Centrifuge come with the function of non-contact imbalance protection, automatic rotor identification, over-speed, over-temperature, motor over-heating and door lid protection, so as to provide safe guard for sample, centrifuge as well as the operator.

ISO9001, ISO13485 quality system runs effectively to guarantee the quality and consistency of the product.

#### ♦Sturdy Rotor

All sturdy rotors adopt 7075-T6 series aluminum ,hard oxidation, corrosion resistance.

#### ♦Excellent Temperature Control System for Sample Protection and Energy-saving.

Through multiple data simulation and integral calculation, ensure that the temperature change of the sample does not exceed 2°C. Dynamic compressor control (DCC) technology for optimized cooling performance. The compressor will stop running after the centrifuge door lid is opened, reduces 40% energy consumption compared with similar products, and extend compressor service life .

#### ♦Quiet Operation to Benefit Your Environment

Make your lab environment a better place to work with L800R-2 refrigerated centrifuge that are quiet, user-friendly, little heat dissipation and relatively compact, and you can operate comfortably with ergonomic machine height.

#### ♦Extensible

The system adopts unified and standard Ethernet communication interface and provides key parameter point table, to facilitate system expansion and bring data into system monitoring.

#### ♦Centrifuge Management System( Optional)

It can monitor 1 to 100 centrifuges through intelligent terminal (computer), monitor the operation status of centrifuges, and save relevant records of centrifuge operation, Establish a safe connection with the centrifuge and remotely control the startup and stopping of the centrifuge.

#### ♦Programmable

Save up to 1000 user-defined program. Users can name each program to distinguish it. Each program can be divided into 5 steps ( set speed, time, temperature ), to meet the diversified experimental needs.

#### ♦ACC/DEC Rates

11 acceleration and 11 deceleration rate, to prevent second emulsion or turbid, to achieve best centrifugation result.

#### ♦Main Interface Function

In manual mode, the centrifuge parameters can be set quickly, and the G-force and speed switched by soft touch the key. The stability of temperature and speed during spinning can be viewed through the curve.

#### ♦Powerful System Setting Function

Powerful control system allows easy data capture, storage, and processing. English /Chinese operation language optional.



## Technical parameter

Order NO	0204130000			
Max Speed	Angle Rotor	8000r/min	Swing Rotor	4200r/min
Max RCF	Angle Rotor	11875xg	Swing Rotor	5100xg
Max Capacity	Angle Rotor	6x1000ml	Swing Rotor	6x1500ml
Speed Accuracy	±10r/min			
Time Setting Range	1min~99h59min			
Timing mode	Start Timing after Spinning, Start Timing after Reach Setting Speed, Continuous Timing, Operation at an appointed Time			
Temperature Setting Range	-20 ~40°C			
Temperature Accuracy	±2°C			
Compressor Unit	Environment friendly refrigerant (R404a)			
Noise	≤ 65dB (A)			
Power Supply	AC220±22V 50Hz			
Power Consumption	5.5kW			
Dimension (WxDxH)	730x930x960(mm)			
Packing Dimension (WxDxH)	920x1040x1560(mm)			
Net Weight	260kg			



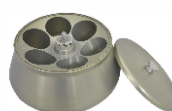
## Rotor parameters

No:1



Rotor Type: Angle rotor  
Max Speed: 8000r/min  
Max RCF: 11875xg  
Max Capacity: 6x500ml  
Order NO: 0301801900  
Adapter: 6x250ml, 6x100ml, 12x50ml (conical), 18x50ml, 42x15ml (conical), 42x10ml, 60x5ml, 78x1.5ml

No:2



Rotor Type: Angle rotor  
Max Capacity: 6x1000ml  
Max Speed: 7000r/min  
Max RCF: 11500xg  
Order NO: 0301891092  
Adapter: 24x50ml (conical/round), 6x250ml, 6x500ml

No:3



Rotor Type: Swing Rotor  
Max Speed: 4200r/min  
Max RCF: 5100xg  
Max Capacity: 6x1500ml  
Order NO: 0302857900  
(rotor, bucket and windshield included)



Rectangular Bucket  
Max Capacity: 6x1500ml  
Order NO: 0303891020



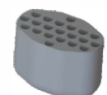
Adapter  
Max Capacity: 6x9x50ml  
Order NO: 0304891153



Adapter  
Max Capacity: 6x9x50ml (conical)  
Order NO: 0304891157



Adapter  
Max Capacity: 6x21x15ml  
Order NO: 0304891151



Adapter  
Max Capacity: 6x21x15ml (conical)  
Order NO: 0304891155



Adapter  
Max Capacity: 6x44x5/7ml  
(Vaccum blood collection tube)  
Order NO: 0304891160  
(The max speed can not exceed 3500r/min with this adapter)

Can be customized